

# 6

## FACTS AND FIGURES

### SCIENTIFIC PUBLICATIONS

#### CITABLE DOCUMENTS



DOCUMENTS	NUMBER
ARTICLES	263
REVIEWS	57
TOTAL	320

#### CITABLE DOCUMENTS WITH IMPACT FACTOR TOTAL: 300



JOURNAL QUALITY		
D1	110	37%
Q1	209	70%
Q2	78	26%
Q3	10	3%
Q4	3	1%

#### OPEN ACCESS

OPEN ACCESS	215	72%
GOLD OPEN ACCESS	114	38%

#### LEADERSHIP

FIRST, LAST OR CORRESPONDING AUTHOR	186	62%
CORRESPONDING AUTHOR	109	36%

PUBLICATIONS IN TOP JOURNALS (IF>10)  
**90** (30%)



The NEW ENGLAND JOURNAL of MEDICINE



European Journal of Heart Failure



Circulation Research



Cardiovascular Research



Circulation  
JOURNAL OF THE AMERICAN HEART ASSOCIATION



AFFILIATION	NUMBER	
CNIC	13	4%
NATIONAL COLLABORATION	110	37%
INTERNATIONAL COLLABORATION	177	59%

OTHER IMPACT INDICATORS	
% DOCS CITED	65,72%
CATEGORY NORMALIZED CITATION IMPACT	2,05
% HIGHLY CITED PAPERS	1,41%
% DOCUMENTS IN TOP 10%	19,79%
% DOCUMENTS IN TOP 1%	2,12%
% INDUSTRY COLLABORATIONS	6,36%

Filter Summary:  
Dataset: Web of Science  
Schema: Shanghai GRAS  
Domestic/International Collaboration: All  
Time Period: [2021, 2021]  
Include Early Access documents: true  
Document Type: [Article, Review]  
Organization Name: [Centro Nacional de Investigaciones Cardiovasculares (CNIC)]  
Funding Data Source: All Sources  
Exported date Apr 11, 2022.  
InCites dataset updated 2022-04-01. Includes Web of Science content indexed through 2022-03-12.

# COMPETITIVE **FUNDING\***



## NEW GRANTS 2021:

PROJECTS, EQUIPMENT AND PERSONNEL

NATIONAL  
62 GRANTS  
**€12,901,403**

INTERNATIONAL  
10 GRANTS  
**€ 7,113,705**

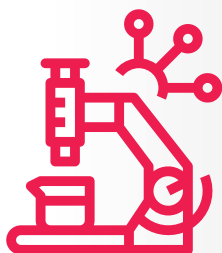


7 H2020 GRANTS  
€ 6,913,259

SEVERO OCHOA AWARD IN 2021 FOR THE  
PERIOD 2022-2025 €4,000,000



## TECHNOLOGY TRANSFER\*



- 18** ACTIVE PATENT FAMILIES
- 6** PATENT FAMILIES LICENSED
- 3** NEW PRIORITY PATENT APPLICATIONS
- 1** NEW OPTION CONTRACTS FOR LICENCE AGREEMENT
- 48** NEW MATERIAL TRANSFER AGREEMENTS
- 19** NEW CONFIDENTIAL DISCLOSURE AGREEMENTS
- 2** NEW RESEARCH COLLABORATION AGREEMENTS

# HUMAN RESOURCES\*

SCIENTIFIC STAFF **409**  
(91% OF TOTAL CNIC STAFF)



WOMEN

260

149

MEN



RESEARCH AREAS **336**



GROUP LEADERS **30**

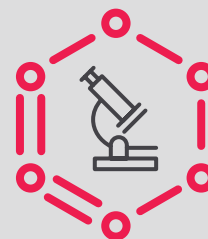
WOMEN

22

8

MEN

TECHNICAL UNITS **73**



HEADS OF TECHNICAL UNITS **11**



MEN

6

5

WOMEN



CARDIOLOGISTS **16**

**52** (13%)

OF THE SCIENTIFIC STAFF ARE FROM OUTSIDE SPAIN



VISITING SCIENTISTS **250**

(FROM INSTITUTIONS OUTSIDE SPAIN: 38 - 16 COUNTRIES)

WOMEN

152

98

MEN

\*DATA AS OF 31/12/2021